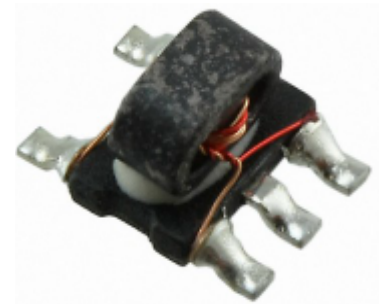


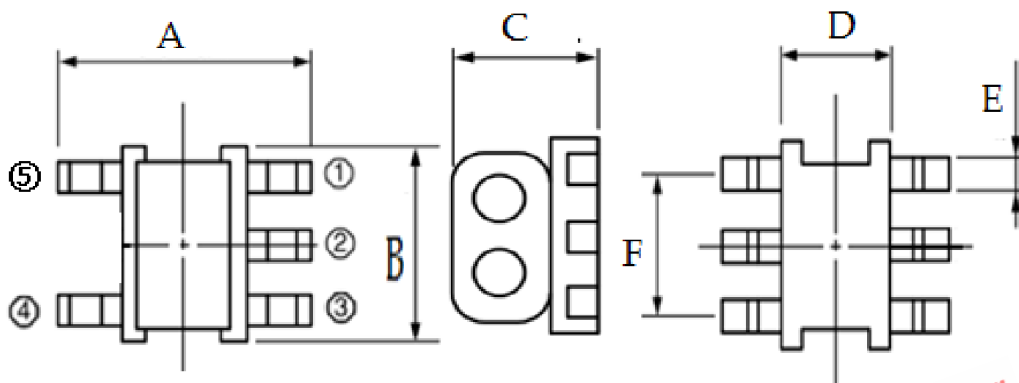
## 1、 MAXIMUM RATINGS:



- ◆ 1.5:1 Impedance
- ◆ 50Ω Characteristic Impedance
- ◆ Frequency: 5 to 1000 MHz
- ◆ Transmission loss: 1.2dB Max; Return loss: 16.0dB Min
- ◆ Operating temperature range: -40°C to +85°C
- ◆ Storage temperature range: -40°C to +100°C

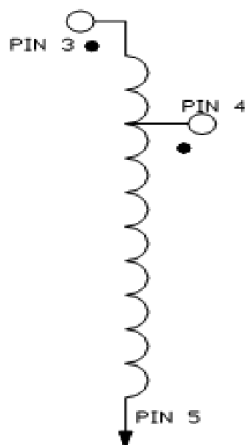


## 2、 DIMENSION DIAGRAM (Unit: mm) :

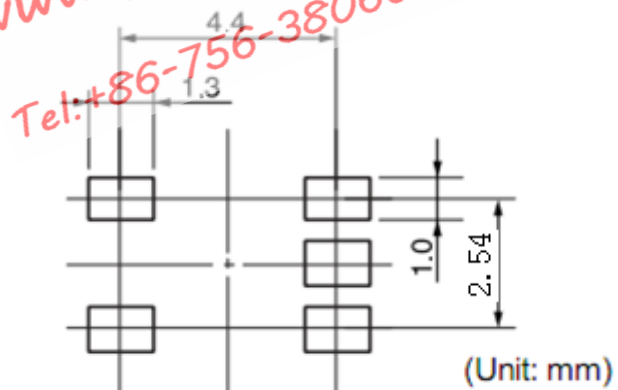


A:4.80±0.20 B:3.80±0.20 C:3.50 Max D:2.80±0.20 E:0.45±0.05 F:2.54±0.05

## 3、 ELECTRICAL STRUCTURE :



## 4、 RECOMMENDED LAYOUT:



DRAW BY

**yang lin**

CHECKED BY

**ye yong jun**

APPROVED BY

**deng gao**

5、INSERTION LOSS TEST CURVE:



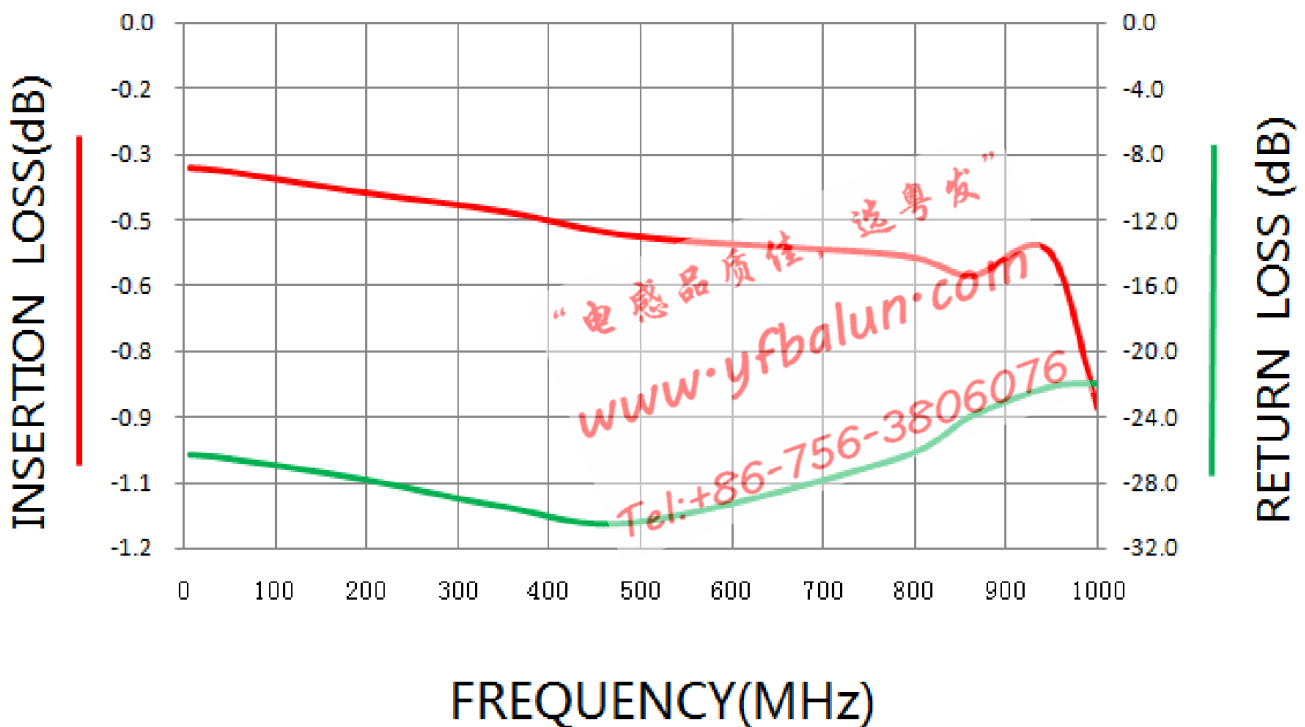
Pin Configuration

Pin No.	Function
1	Not Connected
2	Not Connected
3	Primary Dot (e.g. 75 Ohms)
4	Secondary Dot (e.g. 50 Ohms)
5	Primary and Secondary (Ground)

“电感品质佳，造粤发”  
 www.yfbalun.com  
 Tel:+86-756-3806076

Typical Performance Date

FREQUENCY (MHz)	5.00	50.00	200.00	350.00	500.00	786.0	860.0	946.0	1000.0
INSERTION LOSS(dB)	-0.33	-0.34	-0.39	-0.43	-0.49	-0.53	-0.58	-0.52	-0.88
RETURN LOSS (dB)	-26.33	-26.55	-27.78	-29.43	-30.35	-26.39	-24.03	-22.20	-21.97



DRAW BY

yang lin

CHECKED BY

ye yong jun

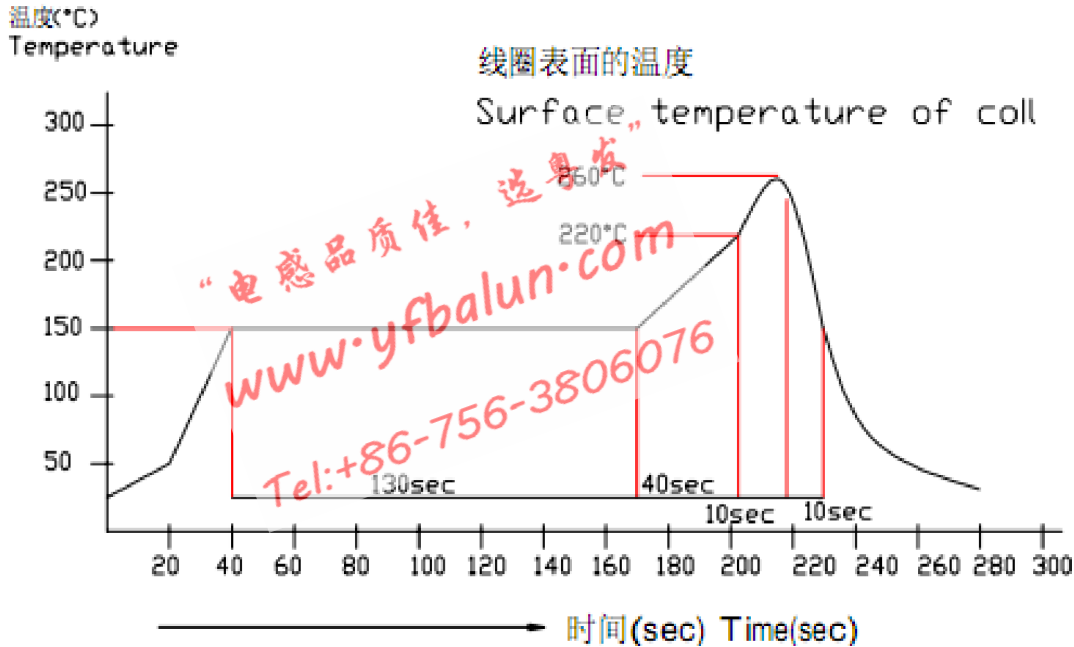
APPROVED BY

deng gao

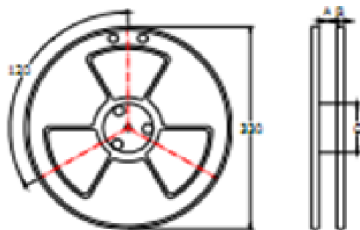
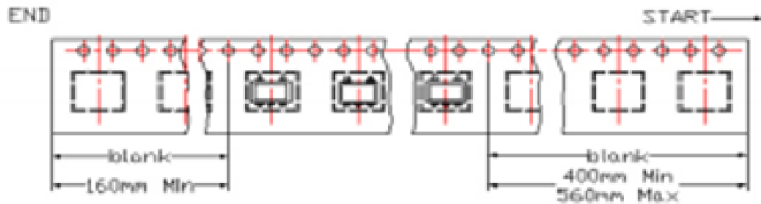
## 6、RECOMMENDED SOLDERING TEMPERATURE GRAPH:



建议迴焊条件  
The condition of reflow  
(Recommendation)



## 7、PACKAGING DIMENSION FOR CARRIER TAPE&REEL(UNIT:mm)



SPEC	8	12	16	24	32	44	56	72
DIM A±0.1	8.5	12.5	16.5	24.5	32.5	44.5	56.5	72.5
DIM B±0.1	2.3	2.3	2.3	2.3	2.3	2.3	2.3	2.3
DIM C±0.1	100	100	100	100	100	100	100	100

“电感品质佳，选粤发”  
www.yfbalun.com  
Tel:+86-756-3806076

### QUANTITY

2000PCS/Reel

DRAW BY

yang lin

CHECKED BY

ye yong jun

APPROVED BY

deng gao